

## First Nations COVID-19 testing in Ontario: Weekly report 58

### Key messages:

- There was a marked increase to **178 new positive results** among First Nations people over the past 8 days ending May 24, 2021. When adjusted down to 156 for a one-week period, this is still higher than the previous week (124). The number of positive results among First Nations to date is 3,993.
- **Over half** of the new positive results this week were in the **Northeast**, which saw a 30% increase in positive test results over last week.
- **Test volume** has **decreased** among First Nations and in Ontario.
- The cumulative positivity rate is increasing slowly in Ontario and in First Nations.
- The **hospitalization rate** among First Nations seems to be **slightly increasing** over time. Death rate seems steady. Ontario rates are steady and declining for hospitalization and death, respectively.

### Coronavirus Disease (COVID-19) Testing in Registered First Nations People in Ontario\*\*

#### WEEKLY UPDATE

Wednesday, May 26, 2021 (covering tests completed May 17, 2021 to May 24, 2021)

<b>N=690</b> Number newly tested for COVID-19
<b>N=178</b> Number newly tested positive for COVID-19

#### NUMBERS TO DATE (covering tests completed January 15, 2020 to May 24, 2021)

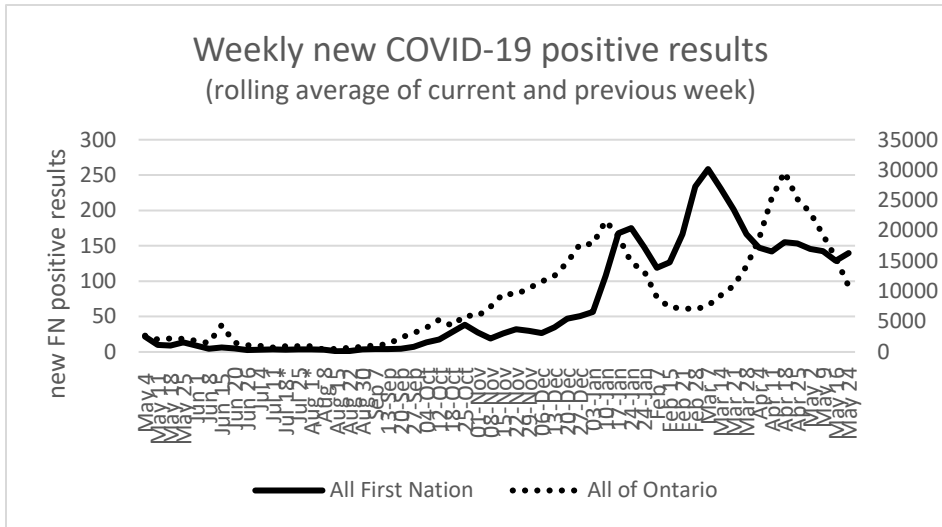
<b>N=62,211</b> Number tested TO DATE for COVID-19
<b>N=3,993</b> Number positive for COVID-19

Key geographic areas (Details in appendix)	Tested	Positive cases	FN population
North West	19,173 (49.8%)	1,171 (6.1%)	38,508
North East	13,315 (38.4%)	404 (3.0%)	34,712
Southwest	15,335 (37.5%)	1,536 (10.0%)	40,896
Southeast	7,848 (36.1%)	427 (5.4%)	21,734
Central	6,425 (42.4%)	446 (6.9%)	15,137

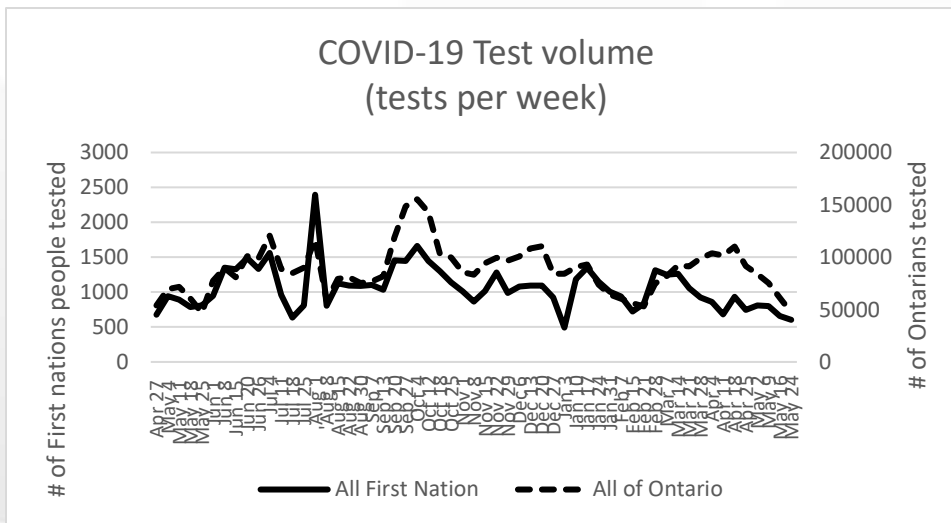
\* suppressed for privacy. \*\* 151,585 Registered First Nations people in Ontario with a health card; \*\*\* based on the residence on the Health Card files.

Databases reflected in this report: As of July 18, 2020, the data sources for this report have expanded beyond the original Ontario Laboratory Information System to include data from the Public Health Information System (IPHIS), Distributed Labs (DL), and Public Health Ontario Laboratory (PHOL) databases. The sources are the same for First Nations and Ontario statistics.

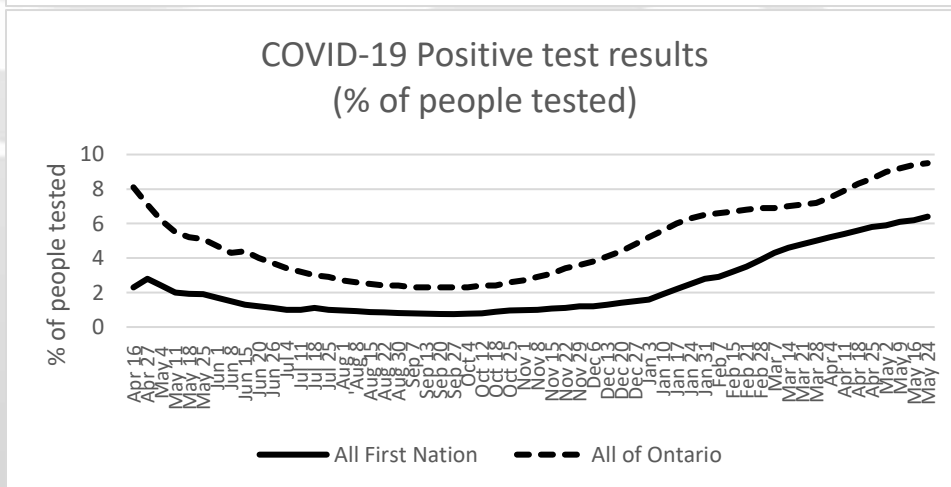
## COVID-19 Test results over time



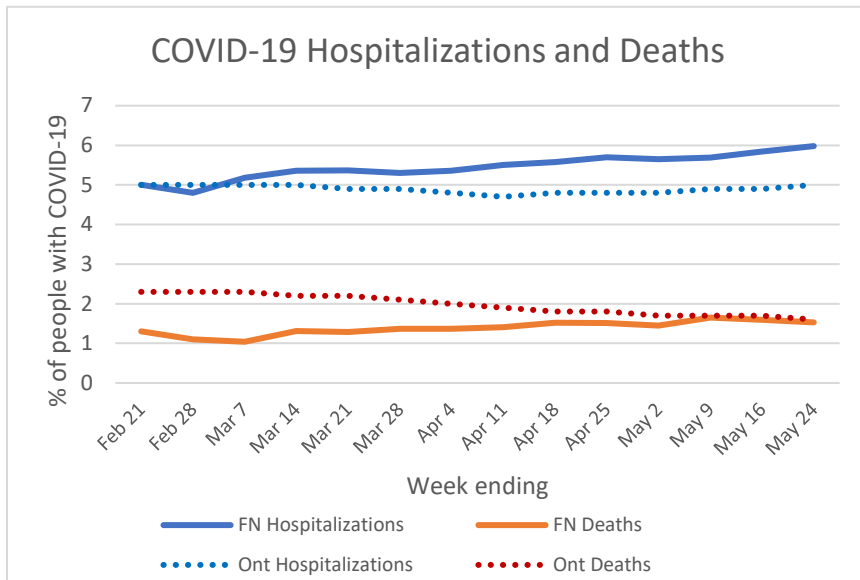
The rolling two-week average of new COVID-19 positive test results among FN **increased**. The Ontario rate **decreased again** this week.



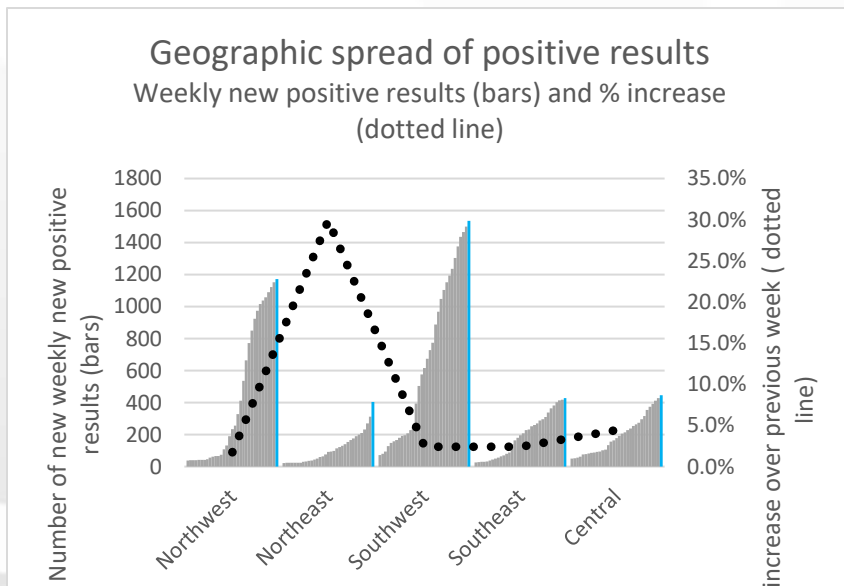
Test volume among First Nations and across Ontario have decreased over recent weeks.



The cumulative rate of positive test results is increasing slowly among First Nations and in Ontario.



The rate of hospitalizations among First Nations seems to be on an increasing trend. First Nation death rate seems steady. Ontario hospitalization seems to be steady with very slightly decreasing death rate.



The Northeast had a 30% increase in new positive results this week. **Over half of the new results this week were in the Northeast.** Blue bars show numbers of new cases in most recent period, with previous weeks' totals in grey. The areas are based on boundaries of Local Health Integration Networks (LHINs). See appendix for details.

**Appendix:**

**Data source:** Characteristics of COVID-19 diagnostic test recipients among the Ontario First Nations population, ICES. Ontario hospitalization and death rates accessed from the [Ontario COVID-19 Data Tool](#).

**Intervals in the reported data:** Data are as of the week ending on the date shown with the exception of June 20, Jun 26 and Jul 4 for which data for First Nations are for the previous 5, 6 and 8 days, respectively, due to changes in reporting period. Data for Ontario and First Nations for week ending Aug 30, Sep 7, Sep 13, Oct 12, Oct 18, Feb 15, Feb 21 and May 24, 2021 are for 8, 8, 6, 8, 6, 8, 6 and 8 days respectively (with weekly test volume prorated to 7-day rate).

**Rolling average of new positive results:** Data for each week is the average of the current and previous week. The rolling average ensures compliance with data suppression rules that preclude release of values less than 5. Data for Jul 18 and Aug 1 are based on averages of the previous and following weeks of both dates, to correct for known data quality issues.

**Boundaries of “areas”:** Test results of individuals are reported for the LHIN associated with the postal code on the individual’s Ontario health card. LHINs included in each “area” for this report are: Northwest: LHIN 14; Northeast: LHIN 13; Southwest: LHINs 1-4; Southeast: LHINs 9-11; Central: LHINs 5-8, 12. Follow this [link](#) to view maps showing LHIN boundaries.

**Suppressed data:** Data suppression is done at ICES. When data for one category in a series are suppressed, at least one of the results based on these categories must also be suppressed. Hence totals greater than 5 may be suppressed for one or more areas when at least one of the LHINs included in the calculation of area totals has less than 5 cases.

<b>Coronavirus Disease (COVID-19) Testing in Registered First Nations People in Ontario**</b>			
<b>WEEKLY UPDATE</b>			
Wednesday, May 26, 2021 (covering tests completed May 17, 2021 to May 24, 2021)			
<b>N=690</b>			
Number newly tested for COVID-19 and % of people in the group who were tested			
191 (0.39%)		499 (0.48%)	
in a First Nations community***		outside of a First Nations community	
<b>N=178</b>			
Number newly tested positive for COVID-19 and % of people in the group who were positive			
25 (0.12%)		153 (0.38%)	
in a First Nations community***		outside of a First Nations community	
<b>NUMBERS TO DATE (covering tests completed January 15, 2020 to May 24, 2021)</b>			
<b>N=62,211</b>			
Number tested TO DATE for COVID-19 and % of people in the group who were tested			
21,628 (44.5%)		40,583 (39.4%)	
in a First Nations community***		outside of a First Nations community	
<b>N=3,993</b>			
Number positive for COVID-19 and % of people tested in the group who were positive			
1,243 (5.7%)		2,750 (6.8%)	
in a First Nations community***		outside of a First Nations community	
<b>Key geographic areas (Details in appendix)</b>	<b>Tested</b>	<b>Positive cases</b>	<b>FN population</b>
North West	19,173 (49.8%)	1,171 (6.1%)	38,508
North East	13,315 (38.4%)	404 (3.0%)	34,712
Southwest	15,335 (37.5%)	1,536 (10.0%)	40,896
Southeast	7,848 (36.1%)	427 (5.4%)	21,734
Central	6,425 (42.4%)	446 (6.9%)	15,137
* suppressed for privacy. ** 151,585 Registered First Nations people in Ontario with a health card; *** based on the residence on the Health Card files.			